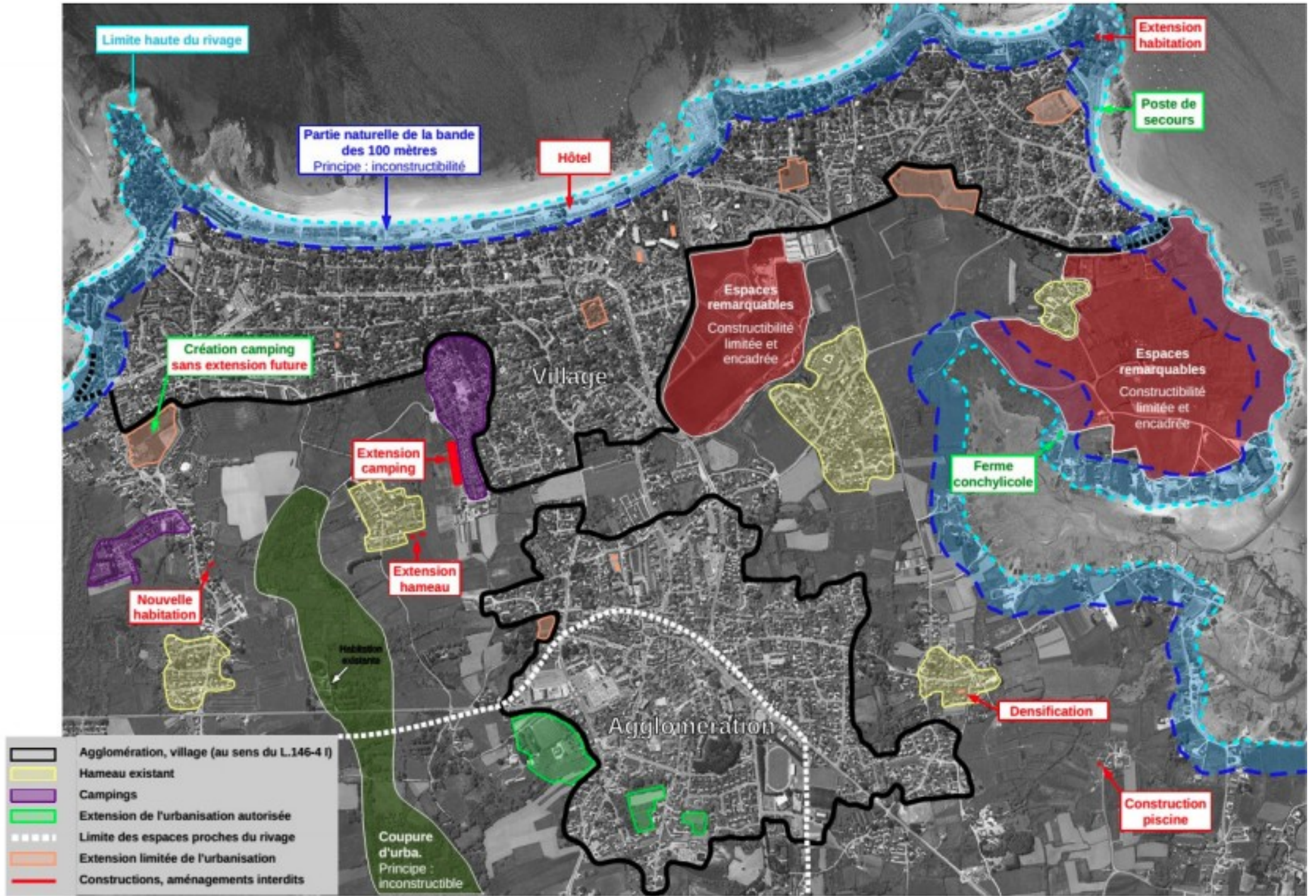

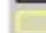

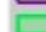





Loi littoral – Synthèse des principes fondamentaux



-  Agglomération, village (au sens du L.146-4 I)
 -  Hameau existant
 -  Campings
 -  Extension de l'urbanisation autorisée
 -  Limite des espaces proches du rivage
 -  Extension limitée de l'urbanisation
 -  Constructions, aménagements interdits
- Coupure d'urba. Principe : inconstructible**